

NDOH Accelerated PMTCT Plan

Interim Report on “Supply” Side

26 August 2009

*Prepared by: Dr Kedar Mate
Institute for Healthcare Improvement*

Highlights

- The “supply side” of the A-plan has been **launched successfully in 6 districts**
- A **strong A-plan management team** led by Dr. Gugu Ngubane has been constituted
- A **network of South African QI organizations** has been moved to action in support of the Aplan
- There is **strong engagement** from District management, clinics and hospitals
- Partners are reporting **promising early results** from initial sites

What is “Quality Improvement”

- Method of identifying gaps in the healthcare system
- Systematic way of closing those gaps and safely improving that process

History

- Nov 08 - NDOH convenes partners meeting to request input for “supply” side of A-plan
- Dec 08 – NDOH requests IHI to add a QI component to the design for improving PMTCT delivery
- Mar 09 - NDOH and IHI co-host a Partners meeting to harvest PMTCT best practices
- May 09- NDOH and IHI co-host a meeting to orient and capacitate QI partners to support the A-plan
- May 09 - NDOH launches “supply” side of A-plan in Zululand using QI design

Principles

- **Sustainability** – Capacitate DOH and South African Partners from outset to use QI methods and tools provided
- **Data driven improvement** – Help to develop reliable data systems that allow districts/facilities to set aims, identify failures, show progress.
- **QI methodology** - Work “smarter, not harder”– i.e. use modern system improvement strategies, not “business as usual”
- **Harvest local knowledge** - Many of the best ideas for improving PMTCT are to be found in local facilities

IHI Deliverables to date

Strategic and Technical advice to NDOH Programme managers.

Regular interaction with A-Plan team
Available for ad-hoc requests

Training and Support to 5 Priority Districts

All deliverables provided as requested (plus support to additional district - Amajuba)

Technical assistance to QI partner organisations

Partners capacitated through training and regular support provided by IHI advisors

QI partner network facilitated by IHI

Sustainability: Development of tools and reports

All guides, best practice documents, report templates provided to Districts and partners as promised. Some guidelines still under development

Support to NDOH Programme Management

- **Strong, functional programme management team** in place led by Dr. Gugu Ngubane
- **Aplan is seen as One Plan** – All elements working together at the District & Facility level
- **Strategic Meetings** with IHI inputs
 - QI Stakeholders Best Practices Meeting Mar 30
 - Durban Partners Meeting May 17-18
 - KZN Provincial MCWH meeting Jul 8 & Aug 12-13
 - PMTCT Steering Committee 15 Jul
 - HST Coordination meeting 31 Jul
 - ESI PMTCT indicators meeting 7 Aug
- **NDOH Training in CQI** planned for September

Training & Support to 5 (+1) Districts

	Sensitisation	Learning session #1	Learning session #2
Zululand	done	done	done
Ilembe	done	2-3 Sept	Nov
Amajuba*	done	done	Oct
Thabo M	done	done	Oct
Bojanala	done	done	Nov
Ukhahlamba	done	done	Oct

Leadership & Spread

	# subdistricts engaged already	District Leadership engaged	Spread to MCWH
Zululand	2 of 5	Very active	Discussed
Ilembe	All	Very active	Part of the plan
Amajuba*	All	Very active	Discussed
Thabo M	1 of 5	Active	Pending
Bojanala	1	Active	Pending
Ukhahlamba	1	Active	Pending

Training by IHI: To Date

Total # of people trained to use QI methods to improve PMTCT	364
# of District staff trained in using QI to manage QI improvement	66
# facility DOH staff trained in using QI to improve PMTCT	223
# QI Partners staff trained in systems improvement methods	75

Technical Assistance to Partners

- Operational Manual for CQI
- Facility implementation guide developed
- Best Practices guidebook (15 high-impact change ideas) distributed
- Routine check-ins and monthly face-to-face meetings with all partners
- QI Partners Network established

QI Partners Network

- All QI organizations supporting the A-plan have been invited to join the Partners Network
- *Goal: Share experiences, knowledge, tools and best practices in the fastest possible way*
- Launched in early August

Tools & Reports for Sustainability

- Key Tools:
 - Online DHIS facility & district-level reports easily accessible by all involved parties
 - Operational Manual for CQI
 - Facility Implementation Guide
 - Best Practices Guidebook “The Change Package”
 - Best Practices “How-to-Guides” (in development)
 - Reporting templates

Reports

- IHI provided QI partners with templates for reporting of District activities and progress
- All QI partners supporting A-plan districts have submitted a report for the first reporting cycle: 14 Aug
- IHI submitted its first report at that time



A-PLAN

The National Accelerated Plan

User Name:

 Password:

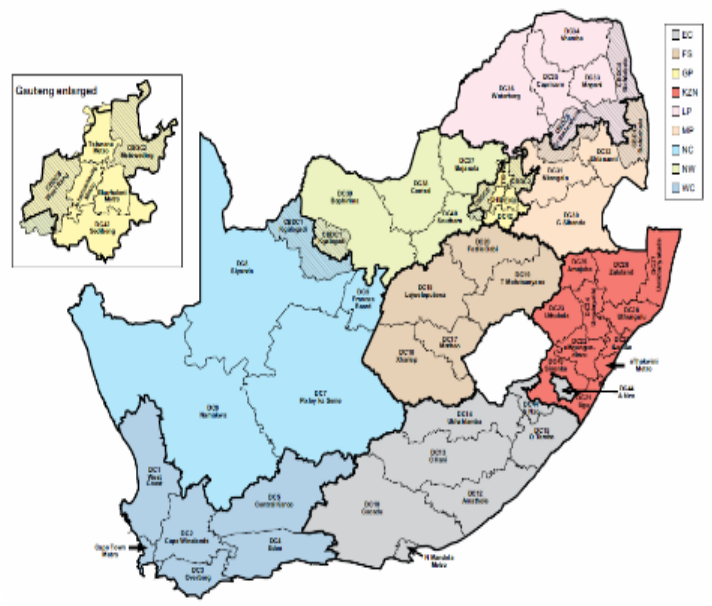
- About the Accelerated Plan
- News & Docs
- Data Management
- Queries
- Graphs
- Reports

About

- Home
- Challenges



Home



Participating Partners



A-PLAN

The National Accelerated Plan

User Kedar Mate logged in at
8/13/2009 8:43:20 PM
Facility Personnel
kz KwaZulu-Natal Province

[Logout](#)

Subreport 1

- About**
- Home
 - Challenges



1 / 3

 100%

Monthly Feedback Report kz KwaZulu-Natal Province 2009-08 13-Aug-2009

kz KwaZulu-Natal Province (c) National Accelerated Plan

kz Amajuba District Municipality

Partners

MRC
Melson Mandela Med School

Leadership

Gugu za

District AIDS Demographics

Population 100000

Estimated mother to child transmissin rate 33%

Health Facilities Engaged

ddddddddddddd eeeeeee fffffff gggggggg

Results to Date: state of A-plan Districts

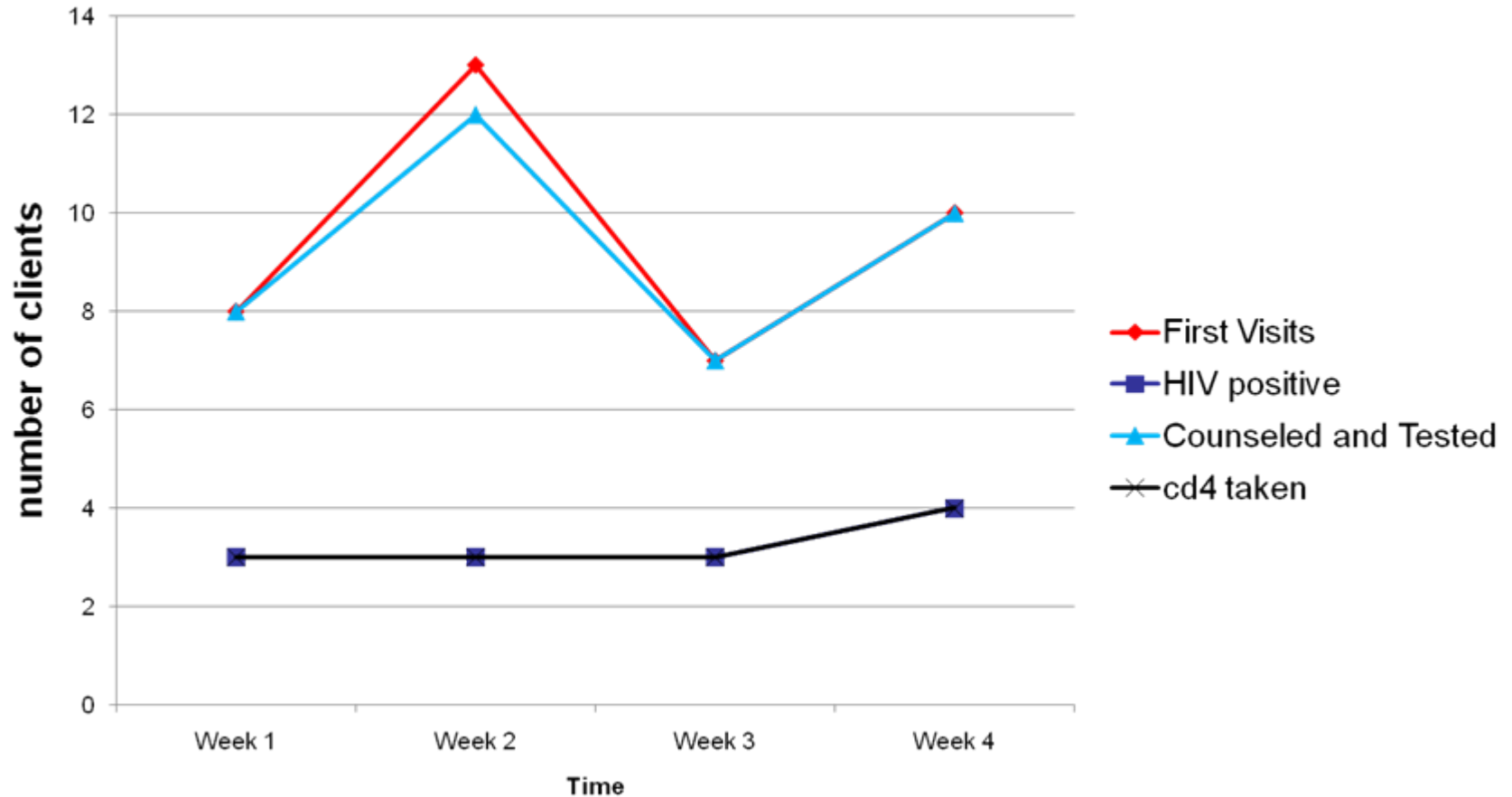
Zululand launched May 09	A-plan activities in 2 of 4 sub-districts. Highly engaged District office, very capable QI support partners (CRH, EGPAF).
Ilembe launch Aug 09	Highly motivated District management—initial launch session next week. QI partner not yet identified
Amajuba* launched July 09	Highly functional pre-existing partnership between QI partner (MRC) and District office. Significant early progress in PMTCT processes/outcomes.
Thabo M launched July 09	Successful launch. District working well with active QI partner (EGPAF). Early PMTCT progress reported
Bojanala launch Aug 09	QI partner (MSH/FPD) recently identified by District management. QI work beginning this week.
Ukhahlamba launched Aug 09	Successful launch and early A-plan work underway. IHI providing direct QI support pending identification of local QI partner

Results to Date

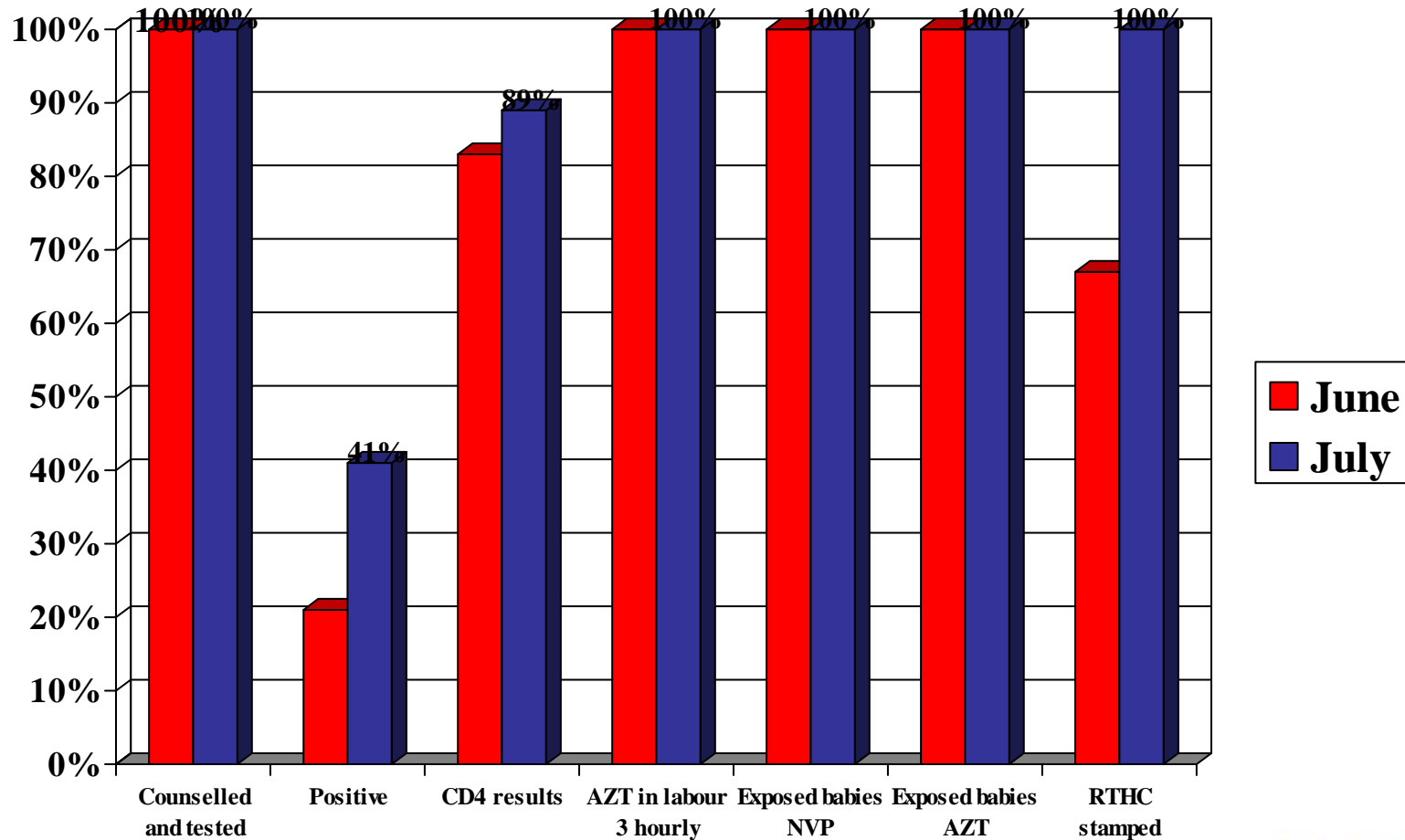
Project Performance Measures:	Raw #	% of Expected
Total Number of Facility Improvement Teams constituted:	58	91%
Total Number of District management teams engaged	8	100%
Monthly Total Number of Facility Visits	92	93%
Monthly Total Number of District Task Team meetings held	11	92%
Monthly Total Number of PMTCT pathway improvements made	55	86%
Total Number of Learning Sessions held this month	3	100%
Total Number of QI Partner Training Sessions held during this reporting period	6	100%

Clinic Level Achievements

Nyangwini Clinic: VCT and CD4 Uptake

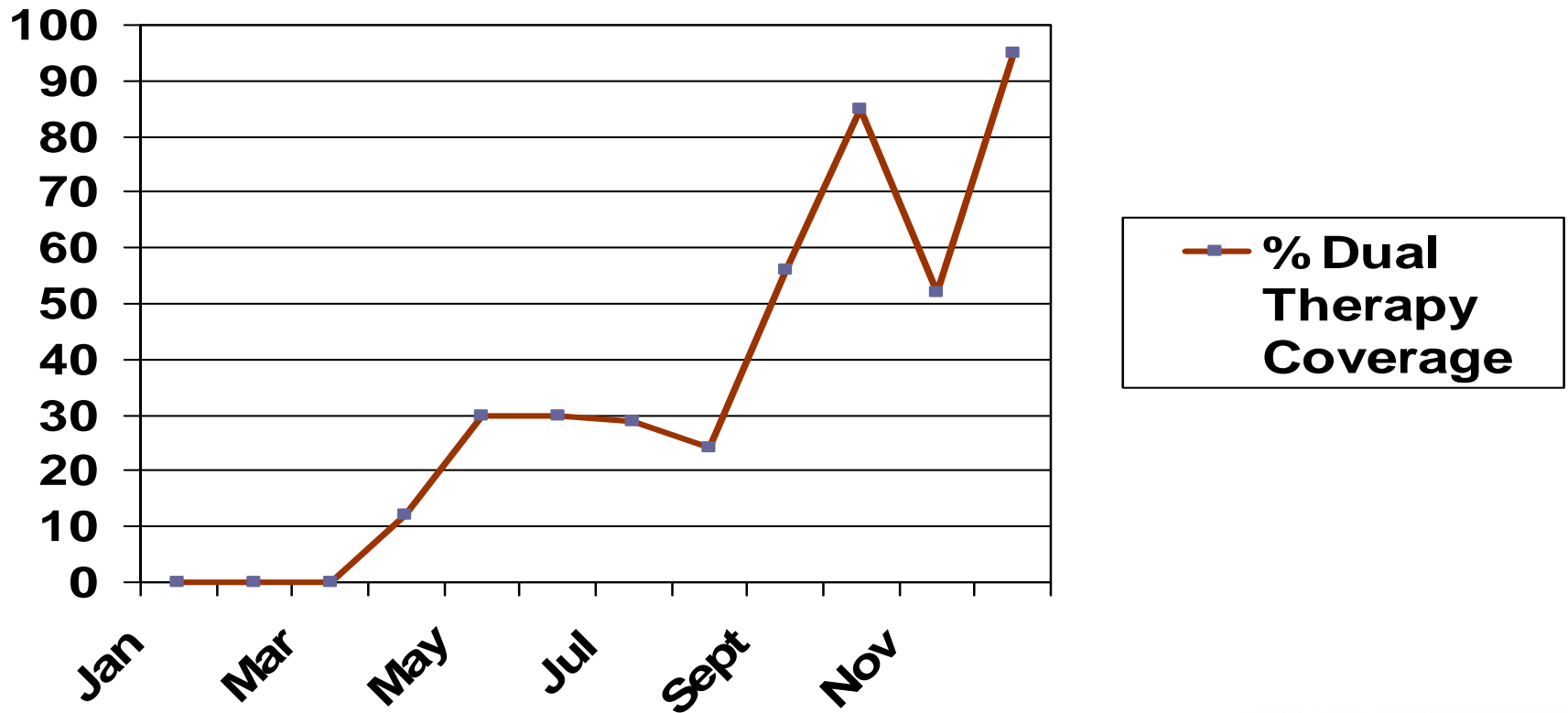


St Francis Hospital - Zululand



Hospital Level Achievements

King Edward Hospital

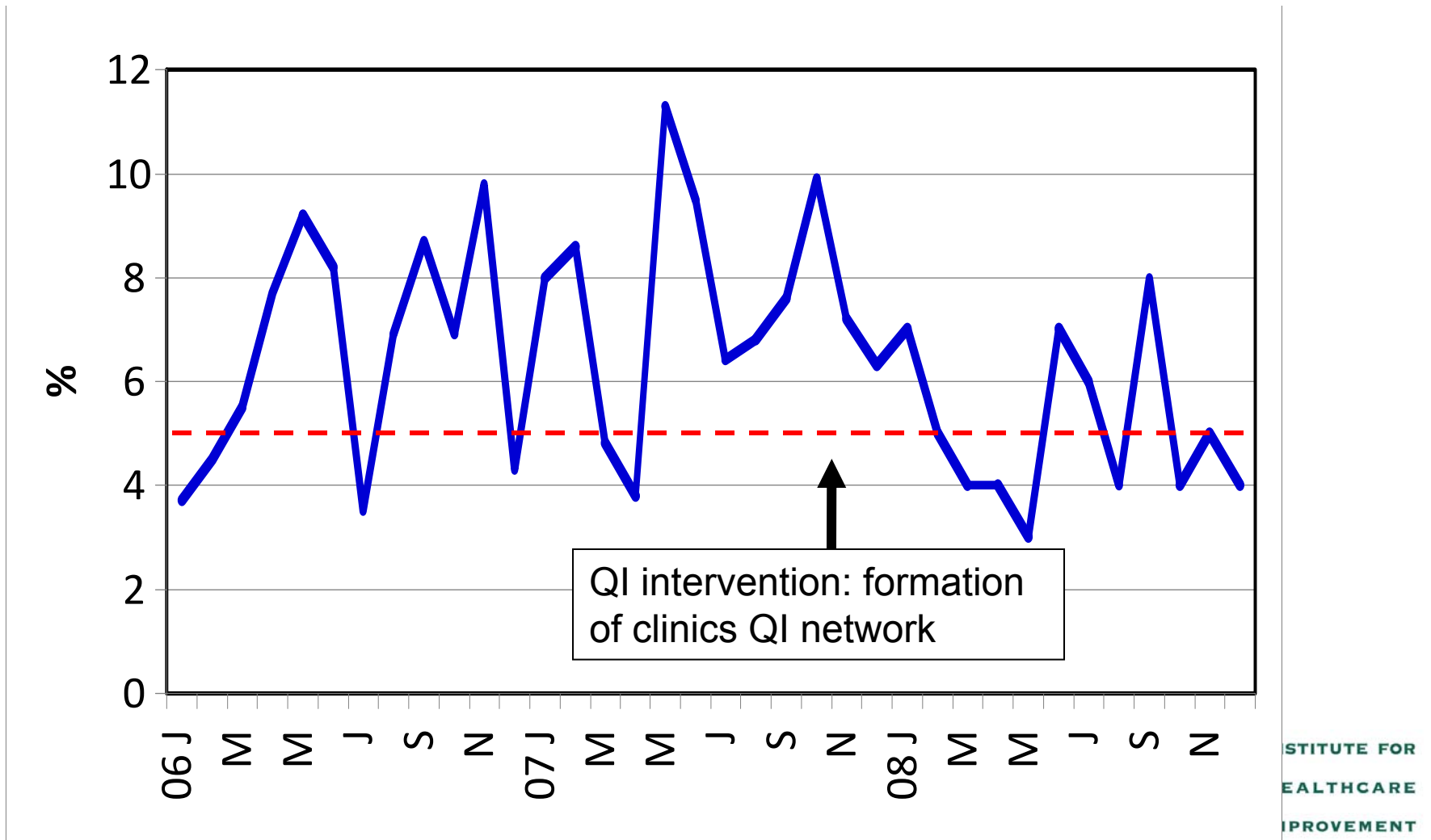


PMTCT Performance: Significant early improvement in Amajuba

- Aim: On 16 Jul, Amajuba District committed to reducing MTCT rates beyond the NSP target to <3%

Dannhauser Subdistrict	Apr-Jun	Jul
% of pregnant women tested for HIV	102%	98%
% of HIV pos pregnant women tested for CD4	101%	100%
% of HIV pos pregnant women receiving dual ARVs	71.4%	100% (+70% catch up from previous month)
% of pos pregnant women receiving HAART	Unknown	13%
% of HIV-exposed infants receiving dual ARVs	90.6%	100%
% of HIV-exposed infants receiving cotrimoxazole prophylaxis at 6 weeks	69.8%	100%
% of HIV-exposed infants PCR tested at 6 weeks	100%+	100%
% of HIV exposed babies tested HIV positive (MTCT rate)	10.4%	2%

Eastern Sub-district: Monthly MTCT rates 2006-2009



Challenges

- Need for clear and short list of indicators that can be reported by DHIS
- Data in DHIS lags by at least 2 months –
- Guidance from NDOH re: programme beyond September 30
- Need for NDOH Steering Committee for the next phase of the work
- Spread to MCWH

Thank You

IHI Staff Supporting NDOH Aplan:

- Dr Pierre Barker, Senior Technical Advisor
- Dr Kedar Mate, A-Plan Project Director
- Dr Nupur Mehta, Improvement Advisor
- Dr Michele Youngelson, Improvement Advisor
- Mr Nicholas Leydon, Improvement Advisor
- Mr Brandon Bennett, Trainer/Advisor
- Ms Sarah Olver, Administrator